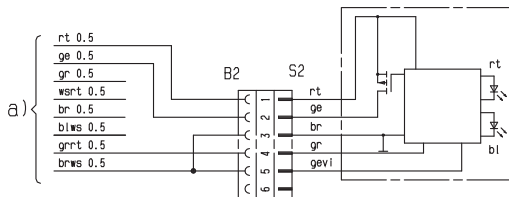


Circuit Diagrams – Airtronic Mini-Controller

Connection to Airtronic, Airtronic M, Airtronic L



3.1.17



EN

Connector housing pin assignment -S2

3.1.17 Airtronic Mini-Controller

- a) to the heater
- rt Power supply, positive, terminal 30
- ge Switch-on signal S+
- gr Actual temperature value
- wsrt Switch off the anti-theft alarm system
- br Power supply, negative, terminal 31
- blws Diagnostics
- grrt Temperature setpoint value
- brws Reference signal sensor

Cable colours

rt	red	gr	grey	sw	black
bl	blue	ge	yellow	gn	green
ws	white	vi	violet	br	brown

Insulate unused cable ends. Connector housing chamber assignment (assignment seen from the cable inlet side).

i Please note!

- Please find further information on the device installation and connection on the enclosed CD.

i Please note!

- When installing the connector, ensure that the locking tangs always face the middle of the connector.

Headquarters:

Eberspächer Climate Control Systems
 GmbH & Co. KG
 Eberspächerstraße 24
 73730 Esslingen
 Hotline: 03976 2350235
 Fax hotline: 01805 262624
 info@eberspaecher.com
 www.eberspaecher.com